

St Ives Hockey Club



Information for Visiting Teams

England Hockey Info (Pages 2, 3, 5 & 6)

SIHC Pitch Map (Page 4)

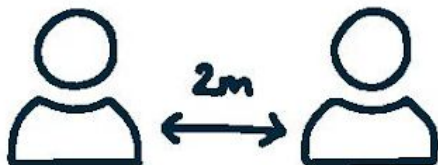
1. The Centre is only to be used for toilets.
2. There are NO changing facilities at the site.
3. All people not part of the team to turn LEFT at entry to the pitch and use social distancing boxes all 2 meters and **MAXIMUM** of 6.
4. Once the match before has finished please take all of your kit from the waiting area

HOCKEY'S BACK!

MATCH DAY & TRAINING GUIDANCE

ON THE PITCH

FOLLOW HOCKEY'S RETURN TO PLAY GUIDELINES



SOCIAL DISTANCING RULES CAN ONLY BE BROKEN WHEN THE BALL IS 'IN PLAY' (MEANING YOU MUST BE 2M APART DURING WARM UPS/COOL DOWNS & BREAKS IN PLAY)



NO TEAM HUDDLES, TEAM GOAL CELEBRATIONS OR CONGREGATING IN DUGOUTS



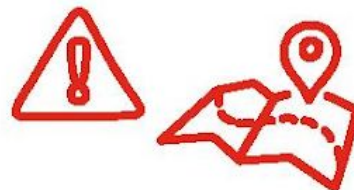
THERE ARE NO 'HOCKEY BUBBLES' BUBBLES ARE WHERE SOCIAL DISTANCING ISN'T ABLE TO BE MAINTAINED IN PLACES SUCH AS SCHOOLS OR HOUSEHOLDS



TRAIN IN DISCRETE GROUPS OF UP TO 30, BUT PLAY WITH NORMAL SQUAD SIZES

OFF THE PITCH

FOLLOW GOVERNMENT GUIDANCE



IF YOU NEED TO TRAVEL TOGETHER:
- KEEP TO THE SAME SMALL GROUPS
- OPEN WINDOWS FOR VENTILATION
- WEAR A MASK



IF SOCIALISING AFTER ACTIVITY ADHERE TO THE GOVERNMENT'S SOCIAL DISTANCING GUIDANCE



ANY SPECTATORS TO REMAIN SOCIALLY DISTANCED WHILST ATTENDING TRAINING AND GAMES



IT'S YOUR RESPONSIBILITY TO UNDERSTAND & ADHERE TO THE RETURN TO PLAY GUIDANCE TO KEEP YOURSELF, TEAMMATES & OTHERS SAFE



ENGLAND HOCKEY

PLEASE NOTE THAT GUIDANCE MAY CHANGE AT SHORT NOTICE AND RESTRICTIONS MAY BE REINTRODUCED. TO STAY UP TO DATE WITH ENGLAND HOCKEY RETURN TO PLAY GUIDELINES VISIT WWW.ENGLANDHOCKEY.CO.UK/COVID19 TO STAY UP TO DATE WITH GOVERNMENT SOCIAL DISTANCING GUIDELINES VISIT WWW.GOV.UK/CORONAVIRUS



St. Ives Hockey Club

HOCKEY'S BACK!

HERE'S WHAT TO REMEMBER

AT HOME



SIGN A PLAYER AGREEMENT*
***(ONLY THE 1ST TIME YOU PLAY)**

BRING HAND SANITISER

WEAR YOUR PLAYING KIT

**SELF-ASSESS FOR COVID
SYMPTOMS**



**FOLLOW THE GOVERNMENT TRAVEL
ADVICE**

**CHECK IN WITH YOUR ORGANISER FOR
TRACK & TRACE PURPOSES**

**SOCIALLY DISTANCE AT 2M IN GROUPS
OF 6 MAX**

CLEAN YOUR HANDS DURING BREAKS

**FOLLOW THE FACILITY RULES WHEN
ACCESSING INDOOR SPACES**

OUTSIDE OF PLAY

DURING PLAY



RESPECT YOUR OPPOSITION & UMPIRES

**TAKE PENALTY CORNERS & FREE-HITS AROUND
THE D PROMPTLY**

**ONLY TOUCH THE BALL WITH YOUR STICK/
GK EQUIPMENT**

USE YOUR OWN PPE OR DISINFECT BEFORE USE
SOCIALLY DISTANCE WHEN PLAY STOPS

**NO HANDSHAKES WITH OTHER PLAYERS OR
CLOSE CONTACT DURING GOAL CELEBRATIONS**

AVOID SHOUTING EXCESSIVELY AND SPITTING

**AVOID RUNNING EXERCISES THAT INVOLVE
OVERLY REPETITIVE CLOSE CONTACT**



**CLEAN YOUR KIT OR LEAVE
FOR 72 HOURS**

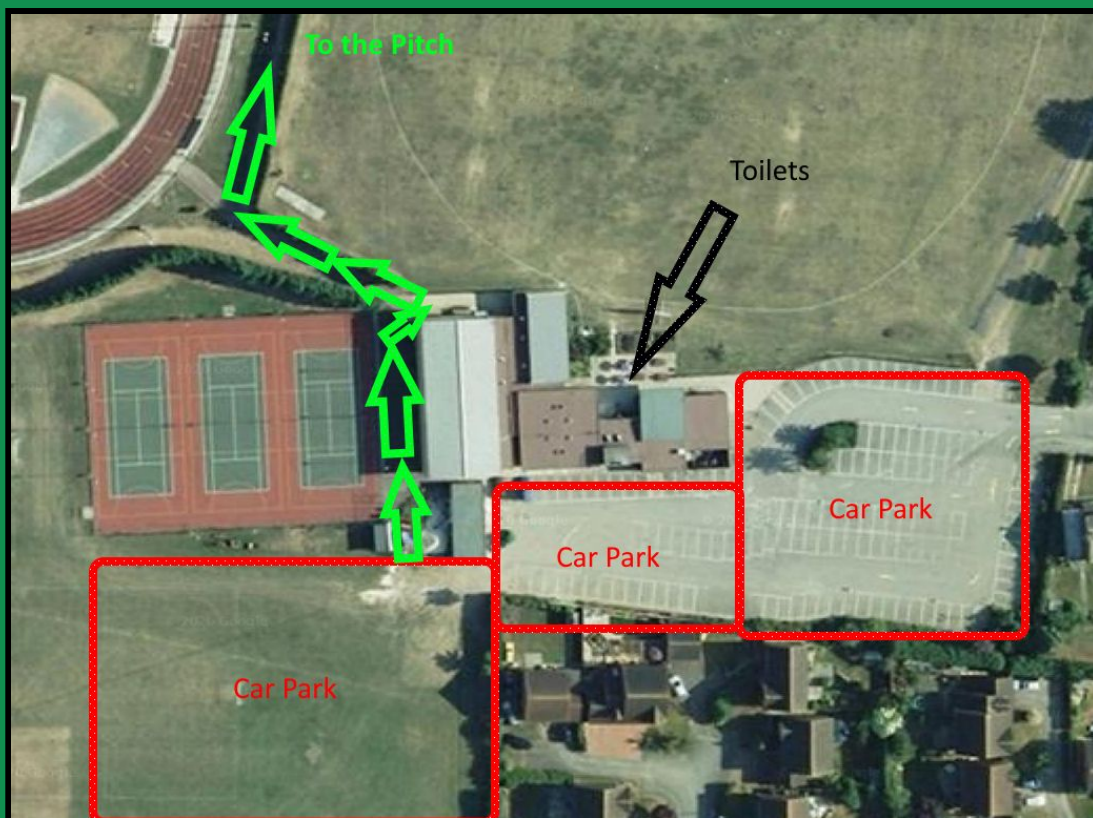
**IF YOU DISPLAY ANY SYMPTOMS AFTER
PLAYING CONTACT YOUR HOCKEY
PROVIDER'S COVID-19 OFFICER
IMMEDIATELY**

AFTER



**ENGLAND
HOCKEY**

PLEASE NOTE THAT GUIDANCE MAY CHANGE AT SHORT NOTICE AND RESTRICTIONS MAY BE REINTRODUCED.
TO STAY UP TO DATE WITH ENGLAND HOCKEY RETURN TO PLAY GUIDELINES VISIT WWW.ENGLANDHOCKEY.CO.UK/COVID19
TO STAY UP TO DATE WITH GOVERNMENT SOCIAL DISTANCING GUIDELINES VISIT WWW.GOV.UK/CORONAVIRUS



No Access to the pitch through the centre, go around the buildings. Toilets are open but social distancing and capacity numbers in place, see information boards on entering



Arrival at the pitch - All Players, Officials, Coaches and Managers who are part of track & trace to go Right (green arrow). Where a match is in play Away Team Waiting Box A, Home team Waiting Box B. Any person not part of track and trace Left (Red arrow) and use social distance boxes MAXIMUM of 6 people per box..

ANYBODY NOT FOLLOWING GUIDANCE MAY BE ASKED TO LEAVE THE SITE



St. Ives Hockey Club

GETTING BACK ON THE PITCH

HELP PREVENT THE SPREAD OF COVID-19



MAINTAIN 2M* SOCIAL DISTANCE

(UNLESS YOU ARE FROM THE SAME
HOUSEHOLD)

*THAT'S ABOUT 2 ADULT SIZE HOCKEY STICKS APART



PLEASE NOTE THAT GUIDANCE MAY CHANGE AT SHORT NOTICE AND RESTRICTIONS MAY BE REINTRODUCED.
TO STAY UP TO DATE WITH GOVERNMENT SOCIAL DISTANCING GUIDELINES VISIT WWW.GOV.UK/CORONAVIRUS

